



Annual Primary Care Conference 2012

3-6 October 2012 • SECC, Glasgow

In partnership with
SAPC
Society for Academic
Primary Care



Don't miss the primary care event of the year!

www.rcgp.org.uk/annualconference

Principal sponsor



Silver sponsors



Media partner



Supporters



About the Conference

The Conference is the 'must attend' event of the year for GPs and practice team colleagues, showcasing the latest clinical and policy developments across the UK. It brings together an impressive range of national and international speakers.

Why attend?

- Attending the Conference will help your day-to-day practice and enhance your patient care.
- The Conference updates you on matters relevant to your practice and informs and educates on the latest technological developments.
- A packed programme ensures there is something to suit everyone.
- The extensive programme features clinical, education, policy, commissioning and patient sessions as well as specific sessions for First5 GPs, Associates-in-Training (AITs) and the wider practice team.
- Small seminars and workshops focusing on clinical updates.
- Learn new skills and exchange ideas using a range of educational techniques.
- Network and exchange ideas with over 1700 primary care professionals.
- An extensive social programme allows time for some fun and relaxation.
- Previous attendees said attending the Conference left them feeling energised and proud to be a GP.

This year's Conference theme is **Global General Practice** where we shall be:

- celebrating best practice in the healthcare services we deliver in the UK;
- and welcoming international speakers and colleagues to learn about innovative practice in other parts of the world.

The Society for Academic Primary Care (SAPC) will share the first day of our conference, providing an excellent opportunity for specialist academic input to our opening programme.

SAPC

As always, this will be different from any other conference you attend this year. We look forward to welcoming you to Glasgow in 2012 and giving you a conference to remember!



Host



David Haslam

Plenary speakers



Iona Heath



Clare Gerada



Susan Greenfield



David Pendleton



Al Aynsley Green



Nicola Sturgeon



Earl Howe



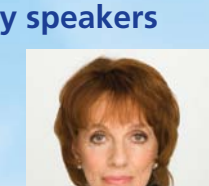
Sally Gunnel



Neil Hunt



Anna Dixon



Esther Rantzen

SAPC plenary speakers

International speakers



Ryuki Kassai



Dee Mangin



Prof. Khaya Mfenyana



Dr Samar Musmar

Panel speakers



Lord Victor Adebowale



Rich Roberts



David Nicholson



Matt Sutton

Plenary programme

WEDNESDAY 3 OCTOBER

- 2.00-5.00 **AiTs, First5, JIC event (£25.00)**
 Special half day event for all national and international AiTs and First5 GPs.
Speakers: Dr Iona Heath, President, RCGP, Dr Steve Mowle, Vice Chair, RCGP and the Leads of the AiT, First5 and JIC groups
- 3.30 **CONFERENCE OPENS**
- 3.30 Registration, tea and exhibition
- 4.00 **Coffee and SAPC posters**
- 4.30 **SAPC plenary session – Celebrating difference**
Chair: Ann Adams, SAPC Secretary
From cottage industry to post-industrial care: the necessary transformation of primary care
Anna Dixon, Director of Policy, The King's Fund
 (open to all RCGP delegates)
- 5.00-7.00 **RCGP welcome reception and official opening of exhibition and conference with Lord Provost**
- 6.30 **Fringe and satellite meetings**
 60th Anniversary wine tasting (£29)
Vasco da Gama reception

THURSDAY 4 OCTOBER

- 8.00-9.30 Registration, coffee and exhibition
- 8.20-9.20 **Fringe and satellite meetings**
- 8.20-9.20 **SAPC AGM** including the Yvonne Carter award
- PLENARY SESSION 1: JOINT SAPC SESSION**
- 09.30 **President's welcome**
Dr Iona Heath, President, RCGP
- 09.40 **Host's opening remarks**
Prof. David Haslam, National Clinical Adviser, Care Quality Commission, and Immediate Past President of RCGP and BMA
- 09.45 **Chair's address**
Dr Clare Gerada, Chair, RCGP
- 10.10 **Global insights: science and humanity**
Baroness Susan Greenfield, scientist, writer and broadcaster
- 10.35 **Leadership for delivering global family medicine**
Dr David Pendleton, Director, Edgumbe Group
- 11.05 Coffee, exhibition and attended poster session 1
- 11.50-12.50 **Concurrent streams A**
- 12.50-2.00 Lunch, exhibition, posters and sponsors' symposia

2.00-3.00 PLENARY SESSION 2

- 2.00 **Research paper of the year**
Introduced by Dr John Gillies, Chair, RCGP Scotland
Smoking cessation support delivered via mobile phone text messaging (txt2stop): a single-blind, randomised trial
Dr Caroline Free, LSHTM
- 2.15 **Is competition healthy?**
Prof. David Haslam, National Clinical Adviser, Care Quality Commission, and Immediate Past President of RCGP and BMA
- Sir David Nicholson, Chief Executive, NHS
 - Lord Victor Adebawale, Chief Executive, Turning Point
 - Prof. Rich Roberts, President, WONCA
 - Prof. Matt Sutton, Health Economist, University of Manchester
- 3.00-4.00 **Concurrent streams B**
- 4.00-4.45 Tea, exhibition and attended poster session 2
- 4.45-5.45 **Concurrent streams C**
- 6.00-7.00 **Fringe and satellite meetings**
- 7.30 **Social events:**
- Scottish "Burns Night" supper
 - AiT curry, quiz and live band followed by dancing at Sloans with First5 colleagues
 - First5 exclusive networking and supper at the historic Corinthian Club followed by dancing at Sloans with AiT colleagues

FRIDAY 5 OCTOBER

- 8.00-9.00 **Fringe meetings**
- PLENARY SESSION 3**
- Global challenges: GP heroes**
- 9.15 **Host's introduction**
Prof. David Haslam, National Clinical Adviser, Care Quality Commission, and Immediate Past President of RCGP and BMA
- 9.20 **Japanese experience post-tsunami**
Prof. Ryuki Kassai, Department of Community & Family Medicine, Fukushima Medical University, Japan
- 9.40 **Effects of the earthquakes on healthcare in NZ**
Prof. Dee Mangin Director, General Practice Research Group, Associate Professor, University of Otago, New Zealand
- 10.00 **Family medicine and primary healthcare in the African context**
Prof. Khaya Mfenyana, Executive Dean of the Faculty of Health Sciences, Walter Sisulu University, South Africa
- 10.20 **Under fire: healthcare provision in a conflict zone**
Dr Samar Musmar, An-Najah National University, Palestine

10.40 Global discussion with all speakers

- 11.00 Coffee, exhibition and attended poster session 3
- 12.00-1.00 **Concurrent streams D**
- 1.00-2.10 Lunch, exhibition, posters and sponsors' symposia
- 2.10-3.10 **Concurrent streams E**
- 3.10-4.00 Tea, exhibition and attended poster session 4
Ask the RCGP Chair anything! Question time session with Dr Clare Gerada
- 4.00-5.00 **Concurrent streams F**
- 5.00 **PLENARY SESSION 4**
Inaugural Ann McPherson Memorial Lecture
Young people's health
Prof. Sir Al Aynsley Green, former Children's Commissioner for England
- 6.00-7.00 **Fringe and satellite meetings**
- 7.30 **RCGP 60th anniversary dinner and party with live bands and ceilidh**
 Including presentations of the UK-wide Caring for Carers Awards.

SATURDAY 6 OCTOBER

- 9.30-10.30 **Concurrent streams G**
- 10.30 Coffee
- CLOSING PLENARY SESSION**
- 10.50 **A political perspective from Scotland**
Nicola Sturgeon, MSP, Cabinet Secretary for Health and Wellbeing, Scottish Parliament
- 11.20 **A political perspective from England**
Earl Freddie Howe, Parliamentary Under-Secretary of State in the Department of Health, England
- 11.50 **Olympic inspiration....**
Sally Gunnell, Olympic Gold Medallist and motivational speaker
- 1.00 **Chief Executive's address**
Neil Hunt, Chief Executive, RCGP
- 12.05 **President's address**
Dr Iona Heath, President, RCGP
- 12.35 **Poster awards presentations**
- 12.40 **Closing remarks and summary**
Prof. David Haslam, National Clinical Adviser, Care Quality Commission, and Immediate Past President of RCGP and BMA
- 12.45 **Close**



Concurrent streams

THURSDAY 4 OCTOBER

11.50-12.50

Concurrent streams A

A1
Clinical

Child health - eczema

Chair: Dr Matthew Ridd, GP & Lecturer, University of Bristol

- Dr Nick Francis, GP & Lecturer, University of Cardiff
- Dr Miriam Santer, GP & Research Fellow, University of Southampton
- Dr Kim Thomas, Associate Professor & Deputy Director of the Centre of Evidence Based Dermatology

The SACP Research Group will run this workshop on "Caring for the child with eczema and their family: best practice and emerging evidence."

A2
Policy

The GP of the future – next steps for generalism in primary care

Chair: Dr Robina Shah, Lay Member, RCGP Trustee Board

- **Generalism - meaning and momentum**
Prof Amanda Howe, Honorary Secretary, RCGP
- **Why continuity matters for generalists**
Prof George Freeman, Emeritus Professor of General Practice, Imperial College London
- **The future challenge**
Dr Joanne Reeve, NIHR Clinician Scientist in Primary Care, University of Liverpool
- **Multimorbidity and generalism – rapid change needed**
Dr John Gillies, Chair, RCGP Scotland
- **The challenges of global and UK remote and rural practice**
Malcolm Ward, Chair, Rural Forum (tbc)

This session will give attendees a chance to understand and apply new thinking around why medical generalism is essential to modern clinical practice, and the key role GPs need to play in ensuring it is used effectively across all aspects of patient care.

A3
Quality

COF - will it do what it says on the tin?

- Gillian Leng, Deputy Chief Executive, NICE
- Nick Bailie, Associate Director, Quality Systems, NICE

The Commissioning Outcomes Framework will be a key vehicle to drive the commissioning agenda in England. Hear an up to date precis of the proposals and debate with the speakers their likely effectiveness.

A4.1
SAPC

SAPC: Panel session

Chair: Kath Checkland, University of Manchester
Clinical Commissioning Groups as 'membership organisations': what do we know, what can we learn from the past and what is happening now?

- **Clinical Commissioning Groups: what does it mean to be a 'member'?**
Kath Checkland, University of Manchester
- **Practice engagement in commissioning: what can we learn from the past?**
Stephen Peckham, London School of Hygiene and Tropical Medicine
- **Panel discussion – with the presenters and Anna Coleman, University of Manchester**

A4.2
SAPC

SAPC: Clinical highlights – how useful are risk factors?

Chair: tbc

- **How useful is the seven-point checklist for melanoma in general practice?**
Fiona Walter, University of Cambridge
- **Does Heartwatch work? Preventing Cardiovascular Disease in Primary Care: Role of a National Risk Factor Management Program**
Andrew Murphy, NUI Galway, Ireland
- **What is the relationship between absolute risk of cardiovascular disease and benefit from statin therapy?**
James MacKay, University of East Anglia, Norwich
- **Independent risk factors for injury in pre-school children: three population-based nested case-control studies using routine primary care data**
Elizabeth Orton, University of Nottingham

A5
International

Developing international partnerships to improve global healthcare

Chair: Prof Val Wass, RCGP International Department

- Dr Garth Manning, Medical Director, International Development Programmes, RCGP International Department
- Dr John V Howard, Medical Director, MRCGP[INT], RCGP International Department

Exploring the RCGP's global role as facilitators of excellence in family medicine.

A6
AiTs

Explaining things to patients - so simple, yet so difficult! : A practical workshop for AiTs sitting the CSA

Chair: Stuart Sutton, Chair AiT Committee

- Prof. Celia Roberts, Sociolinguist, Kings College London
- Dr Sarah Atkins, King's College, London
- Dr Kamila Hawthorne, CSA core group member
- Dr Sue Rendel, MRCGP Chief Examiner
- Prof. Robin Simpson, CSA core group member

This interactive session will use examples and role play to get its point across and is designed for GP registrars to practise an aspect of interpersonal skills and clinical management in cases similar to ones in the CSA.

A7
Clinical

Depression in older people and suicide mitigation in primary care

Chair: Prof. Carolyn Chew Graham, University of Manchester

- Dr Alys Cole-King, Consultant Liaison Psychiatrist, Betsi Cadwaladr University Health Board, Healthcare Lead Open Minds Alliance CIC
- Prof Linda Gask, Professor of Primary Care Psychiatry, University of Manchester
- Dr Gillian Green, Director, STORM Skills Training CIC, and STORM Project Manager
- Dr Ian Walton, GP and Chair, PRIMHE

The aim of the session is to understand the identification and management of depression in older people and how depression is a major risk factor for suicide. Also, to discuss the principles of suicide mitigation and the role of the GP.

A8
Education

Leadership in primary care

Chair: Prof. Neil Jackson, Chair, RCGP PTB & Chair of QMTS Committee

Dr David Pendleton, Director, Edgecumbe Group

Please check the website or app for updates on the short paper, fringe and satellite programmes.

Concurrent streams

THURSDAY 4 OCTOBER

3.00-4.00

Concurrent streams B

B1
Clinical**Multimorbidity in general practice: managing complex long-term conditions in partnership with patients***Chair: Dr Imran Rafi, Medical Director, CIRC*

- Prof Stewart Mercer, University of Glasgow
- Prof Chris Salisbury, University of Bristol

This session will offer a fresh and comprehensive perspective on the management of long-term conditions in primary care. Highlight qualitatively distinct approaches required for addressing multi-morbid presentations in general practice; explore shared decision making and partnership building between professionals and patients; explore methodologies linked to public health and active risk assessment of practice populations.

B4.1
SAPC**SAPC: Clinical highlights – is what we are doing working?**

- **Efficacy of sulfonylurea treatment as a monotherapy and added-on to another treatment for glycaemic control in diabetes - a systematic review and meta-analysis**
Jennifer Hirst, University of Oxford
- **'Abandoned acid' - problems with adherence in older women at risk of osteoporosis**
Amanda Howe, University of East Anglia, Norwich
- **Can we prank call GPs in the name of research?**
James Sheppard, University of Birmingham
- **Multidisciplinary perspectives on the sustainability of academic careers in primary care**
Ann Adams, SAPC and University of Warwick

B6
First5**How to prepare for appraisal – helpful hints for First5 GPs***Rafik Taibjee, Hussain Gandhi, Alice Shiner and Clare Taylor, First5 team*

This interactive session will cover different ways to meet the requirements of appraisal and record evidence for revalidation. The session will also cover tips on how to run your own First5 CPD group in a fun and effective way to help support the learning needs of individuals within the group.

B2
Education**Short papers: education**

10mins presentation + 5 questions

Chair: Prof. Nigel Mathers, Vice Chair, RCGP

- **Factors affecting performance in the Clinical Skills Assessment: a linguistic study**
Dr Sarah Atkins, King's College, London
- **Development of postgraduate training in family medicine in Zimbabwe**
Dr Charles Todd, Zimbabwe Health Training Support, Westongrove Partnership
- **Using touch in primary care consultations: qualitative investigation of doctors' and patients' perspectives**
Prof. Carolyn Chew-Graham, University of Manchester
- **Can high risk doctors be remediated?**
Prof. David Blaney, MPS/University of York

B4.2
SAPC**SAPC: Clinical highlights – how do we decide who to treat?***Chair: tbc*

- **Ethnic differences in electrocardiographic abnormalities**
Sonal Nicum, University of Birmingham
- **Risk of stroke and oral anticoagulant use in atrial fibrillation: Cross-sectional survey of 99,000 UK primary care health records**
Tim Holt, University of Oxford
- **The Diagnosis of Urinary Tract infection in Young Children (DUTY) study: derivation and validation of a clinical rule to improve the recognition of urinary tract infection in pre-school children**
Alastair D Hay, University of Bristol
- **Which sexually active female London students get tested for chlamydia and why? Results from the POPI (Prevention of Pelvic Infection) chlamydia screening trial**
Sarah Kerry, St Georges University of London

B7
Innovation**Innovation in informatics**

- **Using data to commission urgent care provisions**

Dr Peter Fox, Clinical Director NHS Pathways

- **Linking primary care with community resources using the ALLISS engine**

Graham Kramer, Clinical Lead for ALLISS

- **Recording and sharing data for patient care**

*Dr Libby Morris, RCGP Health Informatics Group***B8**
GPF**A market place - using our workforces***Chair: Jenny Aston, Chair, RCGP GPF Nursing Group*

- **Jacque Phare, Head of Nursing & Non-Medical Prescribing Lead, Advanced Nurse Practitioner Torbay Care Trust**
- **Dorf Rusco, Hon. Associate Professor, formerly General Practice Lead, Plymouth University**
- **Fiona Cook, General Practice Nursing Unit Lead, Plymouth University, Lead General Practice Nurse, Okehampton Medical Centre**

A market place: what training and skills are needed for your non-medical team? Increasing numbers of advanced nurse practitioners and healthcare assistants, as well as a much smaller number of assistant practitioners and physician assistants, are working in general practice. It is therefore helpful to understand the training and competence needed to carry out these roles and what governance measures need to be in place to ensure patient safety.

This session will be run in a market place style providing an opportunity to find out more about advanced nurse practitioners, practice nurses, healthcare assistants, assistant practitioners and physicians assistants. Each stall will have details about training, competence frameworks and sample Job descriptions.

B3
GPF**We need to talk about our partner!***Chair: Fiona Dalziel, GPF**Speakers from MDDUS*

One of the hardest things to do - manage a Partner whose behaviour is cause for concern. This session will look at effective induction training, recognising symptoms and alarm bells, action to take before things go too far, sources of support and the contribution of other team members, for example the Practice Manager.

B5
Patient**Matters of life and death***Chair: Antony Chuter, Chair, PPG*

- **Quality end of life care for all – UK and global perspective**

Prof. Keri Thomas, RCGP CIRC and National GSF Centre in End of Life care and Prof. Scott Murray, International Primary Palliative Care Research Group, Edinburgh



Concurrent streams

THURSDAY 4 OCTOBER

4.45-5.45

Concurrent streams C

C1
Clinical

Antimicrobials in primary care/respiratory tract infections

Chair: Dr Steve Holmes, CIRC

- **Management of acute respiratory infections**
Prof. Paul Little, University of Southampton
- **Use and abuse of antibiotics**
Michael Moore, RCGP Clinical Champion for Antimicrobial Stewardship

Working in primary care and managing the presentation of many people with infections creates challenges in choosing those that require life saving antibiotics, those that will benefit from a more rapid return to work, school or their daily routine and those for whom antibiotics may be harmful. We are also required to balance this with the population risk, increasing antimicrobial resistance and the dangers of more hospital acquired infections. The commonest presentation in primary care is for respiratory tract problems, many of which are infective. This session will cover current best practice in these areas and highlight the key research and tools available to help us make the best clinical decisions for our patient and our population.

C3
SEG

How does the care of offenders in the UK compare with the continent? - what can we learn? what can we teach?

Chair: Dr Linda Harris, Clinical Director, RCGP Substance Misuse and Associated Health

Dr Marcus Bicknell and Dr Jake Hard, Vice-Chair, Secure Environments Group

The session will examine original research comparing healthcare in prison settings in the UK and internationally. Relevant to prison GPs and all GPs who work with ex-offenders and their families and GPs with an interest in addiction, rehabilitation and health inequalities, GPs considering a career in prison healthcare.

C7
Hot topic

Ethics debate: This house believes that GPs should have a professional responsibility to promote global health, not just local health
Chair: Prof. Martin Marshall, Chair, RCGP Ethics Committee

For: Lord Nigel Crisp, former Chief Executive NHS
Against: Dr Benjamin Brown, Deputy Chair, AiT Committee

C8
Short papers

Short papers: service delivery

- **Effective health care improvements in rural South Sudan**
Dr Helen Shawyer, Medair
- **Benefits to the NHS of global health partnerships**
Dr Nicola Prys-Jones, Heatherview Medical Centre, Poole, Dorset
- **New Zealand rural general practice**
Dr Joseph Scott-Jones, New Zealand Rural General Practice Network
- **Driving quality improvement in general practice**
Prof Ruth Chambers, Clinical Director Practice Development and Performance Stoke CCG & Dr Elizabeth Cottrell, NHS Stoke on Trent

C4
SAPC

SAPC final plenary session

Chair: Prof. Helen Lester, Chair, SAPC

Keynote Speaker: "You called me an elderly primigravida. Now what do you call me?" - Esther Rantzen, CBE, Broadcaster and campaigner
Prize winners

SAPC ASM 2013 presentation

Esther Rantzen, the well known campaigning journalist, will talk about her current work in setting up SilverLine and how primary care can be centrally involved in improving the health and health care of older people

C5
Education

Generation X and Y – learning across the generation divide

Chair: Prof. Jacky Hayden, Postgraduate Dean for the North Western Deanery and Manchester University

Dr John Sanders, Senior Lecturer, Leeds Institute of Medical Education, University of Leeds

Mind the gap! This session will equip you with tools for understanding learning, language and technology across both sides of the generation gap.

C6
GPF

Restructuring and redundancy

- Hilary Haman, Independent Management Adviser and Trainer in Primary Health Care, Cardiff
- Employment Lawyer, Law at Work

Many practices are working on restructuring. What is the impact on the team and how should it be managed? What if you need fewer staff? Is there a redundancy situation? What if another organisation is taking over some of your existing staff? Explore how to manage these situations and protect individuals and the team.

C2
Policy

Integrated commissioning: building relationships

Chair: Dr Steve Mowle, Vice-Chair, RCGP

- **Paternalism to co-production**
Lord Victor Adebawale, Chief Executive, Turning Point
- **Local government view**
Sarah Pickup, President, Association of Directors of Adult Social Services (ADASS)
- **GP perspective and Southampton case study on out-of-hospital model**
Dr David Paynton, RCGP National Clinical Lead for Commissioning

This session will explore themes around widening engagement in commissioning, looking at how building relationships across clinical and organisational boundaries can help ensure that a genuinely integrated approach is taken that achieves the best possible outcomes for patients.

Please check the website or app for updates on the short paper, fringe and satellite programmes.

Concurrent streams

FRIDAY 5 OCTOBER

12.00-1.00

Concurrent streams D

D1
Clinical

Diabetes

Chair: Dr Stephen Lawrence, Clinical Lead, Diabetes

- **Individualising pharmacological treatment intensification beyond Metformin for the person with Type 2 diabetes**
Dr Stephen Lawrence, Clinical Lead, Diabetes
- **The challenges to optimising diabetes care within the framework and principles of clinical commissioning groups**
Dr Brian Karet, GP, Bradford

The burgeoning increase in numbers of people with Type 2 diabetes poses a familiar challenge for every member of the primary healthcare team. The National Institute for health and clinical excellence (NICE) clinical guideline 87 significantly increases the available treatment options. At the same time as emphasising the importance of individualising treatment. All of this needs to be delivered within the financial constraints imposed by aspects of the health and social care bill. This session will explore the increased pharmacological opportunities set against the backdrop of challenging financial constraints.

D2
Policy

Opportunities for a reciprocal approach to international education and development

Chair: Prof. Val Wass, RCGP International Dept

- **Lessons for the UK – the Wales/Brazil case study**
Dr Mathew Harris
- **Ethical issues in an international context**
Prof. Martin Marshall, RCGP Ethics Committee
- **UK general practice's contribution to Millennium Development Goals**
Prof. Nigel Mathers, Vice Chair, RCGP

This session will explore how UK general practice can both learn from and contribute to the international health policy agenda, and what ethical issues should be considered in this context. The session will incorporate an in-depth case study and will include an interactive discussion on the value of reciprocal learning in international health policy.

D3
Quality

The important stuff - will QOF meet the challenge?

• Continuity

Prof George Freeman, Emeritus Professor of General Practice, Imperial College London

• Communication and interpersonal skills

Prof Martin Roland, University of Cambridge
An opportunity to discuss these two important areas of quality in general practice and to consider how they could be incorporated into QOF and what the likely barriers are.D4
Patient

Making IAPT work for GPs: How should we work with and commission the new Improving Access to Psychological Therapy (IAPT) services?

Speakers: Dr Richard Byng/Anthony Chuter/Dr Theresa Eynon/ Dr Ian Walton

- How should GPs act as commissioners and providers of care for anxiety and depression?
- How can we create continuity of individual care between general practice and IAPT services?

D5
Sponsor sessionKeeping up to date in the world of employment law
MDDUS

Janice Sibbald, Adviser, MDDUS

This pragmatic and informative session, from an MDDUS Employment Law Adviser, will focus on the main employment law changes in 2012, the perceived impact on managers and employees and also governmental changes in the pipeline for the future. The session will also touch on how these can be practically applied in a medical environment and offer suggestions on how to reduce the risk of employment tribunal claims.

MDDUS

D6
Innovation

You and social media – thriving and surviving on the social superhighway

Chair: Sharon Alcock, Media Specialist, LimeGreen Media & former BBC Health correspondent
[@LimeandGinger]

- Dr Clare Gerada, Chair, RCGP [@clarercgp]
- Dr Ben Riley, RCGP Medical Director for e-Learning [@drbenriley]
- Margaret McCartney, GP, Glasgow (tbc) [mgmtmccartney]

A fully interactive, multimedia debate on how healthcare professionals are increasingly using social media in their everyday lives – the benefits, opportunities and pitfalls. Follow the discussion live on Twitter (#RCGPAC), debate the RCGP's new Social Media Highway Code and learn about the GMC's new social media guidance for doctors.

D7
Short papers

Short papers: clinical

- **Explaining medically unexplained symptoms**
Dr Christopher Burton, University of Edinburgh
- **An RCT evaluating an intervention based on the theory of planned behaviour to increase chlamydia screening in general practice**
Dr Clodna McNulty, Health Protection Agency
- **Have the public's expectations for antibiotics for acute uncomplicated respiratory tract infections changed since the H1N1 influenza pandemic? A qualitative interview and quantitative questionnaire study**
Dr Clodna McNulty, Health Protection Agency
- **Prescribing errors in primary care: why do they occur?**
Dr Tony Avery University of Nottingham, Harvard Medical School

D8
Hot topic

2022 Primary Care

- **A vision of healthcare delivery for the future**
Dr Clare Gerada, Chair, RCGP
 - **Responding to the educational challenges of future healthcare delivery**
Sir Keith Pearson, Chairman, Health Education England
- Open discussion



Concurrent streams

FRIDAY 5 OCTOBER

2.10-3.10

Concurrent streams E

E1
Clinical

International comparison of patient and practitioner factors in cancer diagnosis

Chair: Prof. Greg Rubin, RCGP / CR-UK, Clinical Lead for Cancer

- **The Cancer Awareness Measure: comparing public knowledge about cancer symptoms**
Prof. Jane Wardle, Professor of Clinical Psychology, UCL
- **Preliminary results from the primary care module of the International Cancer Benchmarking Project**
Dr Peter Rose, University of Oxford
- **Does general practice play a role in the international variation in cancer outcome?**
Prof. Peter Vedsted, Director, Danish Centre for Cancer Diagnosis in Primary Care

The international Cancer Benchmarking Partnership, led by Cancer Research UK on behalf the English DoH, is a major international collaboration between six jurisdictions, intended to understand the reasons for variation in cancer outcome. It is doing this through a series of modules, and in this session we will present some of the early findings. The session will share some of the early insights from these comparative studies in order to increase participants' awareness of their role in improving cancer diagnosis.

E2
Education

Educational outcomes: general practice's contribution to developing the workforce

Speakers: NHS Institute for Innovation and Improvement and Prof. Jacky Hayden, Postgraduate Dean for the North Western Deanery and Manchester University

Quality management in education, the Education Outcomes Framework, improving learning environments

E3
Revalidation

Revalidation countdown

Prof. Mike Pringle, Head of RCGP Revalidation

Get the latest news and developments in revalidation and the RCGP Revalidation ePortfolio. This session will tell you what GPs will be required to do and the information needed for painless revalidation.

E4
Diversity

Inclusive services for the vulnerable and excluded

Chair: Dr Steve Mowle, Vice-Chair, RCGP

- **The need, for interpreting services and the practise of health interpreting within general practice**
Dr Paramjit Gill, RCGP Clinical Champion for Social Inclusion

E5
Research

- **Commissioning for vulnerable migrants**
Rayah Feldman, Project Officer, Maternity Action
- **"You can break my body, but you will not break my will" – how GPs and their primary health care team can support survivors of torture**
Dr Angela Burnett, Freedom from Torture (FFT)

Using health experience narratives to improve care

Dr Louise Locock and Sue Ziebland, Health Experiences Research Group, Dept. of Primary Care Health Sciences, University of Oxford
Patient narratives can be used to improve care, including service redesign, professional education, clinical commissioning, NICE quality standards and national policy. This session will showcase material collected by the University of Oxford's Health Experience Research Group and disseminated on www.healthtalkonline.org by the DIPEX charity.

E6
Clinical

Stories from the frontline

Chair: Prof. Helen Lester, Chair, CIRC

- **Managing depression in LTCs: overcoming mind-body dualism in primary care**
Peter Coventry, Research Fellow, Collaboration for Leadership in Applied Health, Research and Care and Manchester Academic Health Science Centre, University of Manchester
- **A taboo within a stigma? Dementia and incontinence**
Vari Drennan, Professor of Health Policy & Service Delivery, St. George's University of London & Kingston University
- **Diagnosing hypertension – ambulatory monitoring is the most cost effective method**
Prof. Richard McManus, Department of Primary Care Health Sciences, University of Oxford
- **Ventilation in the homes of children with asthma - does it help?**
Dr Richard Neal, Senior Lecturer in General Practice, North Wales Centre for Primary Care Research, Bangor University
- **Diet or physical activity for new Type 2 diabetics: the Early Actid RCT**
Debbie Sharp, Professor of Primary Health Care, Centre for Academic Primary Care, University of Bristol

E7
Short papers

Short papers: audit

Chair: tbc

- **Handover of palliative patients to OOH Services**
Dr Fay Murray-Brown, Macmillan Unit, Christchurch, Dorset
- **Care bundles and QOF data: are composite measures more valid indicators of care quality and reliability?**
Dr Carl de Wet, NHS Education for Scotland
- **The Gateshead Care Home Pilot- proactive primary and specialist care, supporting staff and families**
Dr Mark Dornan, Gateshead Clinical Commissioning Group
- **Assessing the timeliness and completeness of the discharge summary within a community hospital: a clinical audit of 158 patient cases**
Dr Ranjita Howard, Noble's Hospital, Isle of Man
- **The management and follow up of hyperthyroidism in primary care**
Ali Arnaout, University of Sheffield Medical School

E8
GPF

Utilising the e-Portfolio to practice teams to record complaints, significant events and Continuing Professional Development

Chair: Jenny Aston, Chair, RCGP GPF Nursing Group

- **CPD and using the e-Portfolio effectively**
Prof. John Howard, Post-graduate GP Dean, East of England Multi-Professional Deanery and members of the RCGP e-Portfolio team
- **Best practice: managing and recording complaints and significant events**
Fiona Dalziel, DL Consultancy

This session is a chance to explore the opportunities and benefits for the whole team of a consistent approach, using the RCGP e-Portfolio, to record CPD, complaints and significant events and share the learning.

Concurrent streams

FRIDAY 5 OCTOBER

4.00-5.00

Concurrent streams F

F1
Clinical

Latest developments in musculoskeletal medicine: an evidence-based update

- Dr Mark Porcheret, RCGP Clinical Lead OA, Senior Lecturer in General Practice Arthritis Research UK Primary Care Centre, Keele University
- Dr Tom Margham, GP Lead at Arthritis Research UK
- Prof. Christian Mallen, Professor of General Practice Arthritis Research UK Primary Care Centre Keele University
- Dr Louise Warburton, GPwSI in Rheumatology and Musculoskeletal Medicine, Hon Senior Lecturer, Arthritis Research UK Primary Care Centre Keele University, President, Primary Care Rheumatology Society

With an interactive quiz this session will cover the common musculoskeletal conditions presenting in general practice – for example, back pain, osteoarthritis, osteoporosis, gout – with the objective of updating primary care healthcare professionals on the latest evidence on the diagnosis and treatment of these conditions.

F2
Education

Disruptive and distressed?

Dr Jenny King, Director, Edgecumbe Group
Early identification and support for trainees in difficulty.

F3
Policy

Personalisation - personal health budgets

- Chair: Prof. Nigel Mathers, Vice-Chair, RCGP
- Angela Coulter, National Voices (tbc)
 - Dr David Paynton, RCGP National Clinical Lead for Commissioning
 - Dr Paul Myres, Chair, RCGP Wales (tbc)
 - Dr Alf Collins, GP, Somerset (tbc)

This session will look at how modern general practice currently delivers person-centred care and what the future holds - with particular relevance to the introduction of personal health budgets planned for October 2012.

F4
Quality

What do Deep End GPs need to be good at?

Chair: Dr Petra Sambale, Deep End Project

- Dr Catriona Morton, Craigmillar Health Centre, Edinburgh
- Dr Anne Mullin, Govan Health Centre, Glasgow
- Dr Douglas Rigg, Keppoch Medical Centre, Glasgow

The main difference between Deep End practices and other general practices is that there are "more difficult cases". What are the implications for assessing quality in practices serving areas of blanket and pocket socio-economic deprivation?

F5
Patient

Domestic violence and survivors of personal trauma?

Responding to domestic violence - challenges to primary care globally

Dr Alex Sohal and Prof. Gene Feder - RCGP Clinical Champions for Domestic Violence

Supporting GPs to support survivors: A Scottish initiative led by P3

Sue Kinsey, Immediate Past Chair, P3, RCGP Scotland

The challenges of responding to DVA faced by UK primary care will be contrasted with the challenges faced in other countries. The role of GPs internationally in identifying patients experiencing DVA and responding appropriately will be explored. How can GPs support survivors of rape, sexual abuse or domestic violence a P3 initiative?

F6
AiTs

The BIG (AiT) questions

- Dr Clare Gerada, Chair, RCGP
- Dr Colin Hunter, Honorary Treasurer, RCGP
- Dr Stuart Sutton, Chair, AiT Committee
- Dr Krishna Kasaraneni, Chair, BMA GP Trainees Sub-committee

This informal Q+A session is for AiTs with senior figures in the college and those that represent them nationally. This will enable delegates to explore important issues with people that make decisions on their behalf, whom they may not otherwise have the opportunity to converse with.

F7
RCGP
Scotland

Developing a new health service in the Highlands: reflections of 100 years

Chair: Dr John Gillies, Chair, RCGP Scotland

- **The Dewar Commission 1912 – why, who and what did they say to the government**
Dr Miles Mack, GP, Dingwall, Ross-shire
- **The Highlands and Islands Medical Service to the foundation of the NHS: A walk through the time line**
Dr Patricia Whatley, Archivist, University of Dundee
- **Dr Lachlan Grant GP, Scotland, 1912: A pitch for our new GP hero for the RCGP**
Dr Anne Marie Tindlay, Senior Lecturer, Caledonian University

Summary lessons from Dewar for today's service planning

Dr James Douglas, GP, Fort William

The Dewar report of 1912 led to the first comprehensive state funded health service that was the template for the NHS. This story is as relevant to those who seek to modernise the NHS in the UK as it is to those who seek to replicate it internationally. A panel debate will follow the short presentations.

F8
Short
papers

Short papers: clinical

10mins presentation + 5 questions

Chair: tbc

- **Anticipatory care planning and integration**
Dr Adrian Baker, Nairn Healthcare Group
- **Sensory and learning disability access awareness for GP practices**
Sandy Gower and Waqar Shah, UK Vision Strategy
- **Improving patient and project outcomes using inter-organisational innovation, collaboration and co-design**
Liz Evans, Ealing Wellbeing CIC
- **Cutting carbon, cutting costs. Ten tips for saving money on energy**
Dr Trevor Thompson



Concurrent streams

SATURDAY 6 OCTOBER

9.30-10.30

Concurrent streams G

G1
Clinical

NICE/SIGN updates

- Dr Norma O Flynn, Clinical Director, National Clinical Guideline Centre
- Dr Greg Irving, First5 GP

An update on evidence-based guidelines covering recent NICE and SIGN guidelines.

G2
Education

Standards for trainers

Chair: Sarah Whiteman, RCGP MEG

- Professor Sean Hilton, President, Academy of Medical Educators (tbc)
- Dr Vicky Osgood, Assistant Director of Postgraduate Education, GMC (tbc)

G3
Hot topic

Screening causes more harm than good?

Chair: Prof. David Haslam, National Clinical Adviser, Care Quality Commission, and Immediate Past President of RCGP and BMA

- Margaret McCartney GP, Scotland
- Iona Heath, GP, London

G4
Policy

Achieving a GP workforce for the modern NHS – is it attainable?

- **GP recruitment update; The Job Analysis Project**
Prof Fiona Patterson, Work Psychology Group and MeiLing Denney, RCGP

- **A global perspective on GP workforce shortages**

Mark Purvis, Director of GP Education, Yorkshire and Humber Postgraduate Deanery

- **Making it happen here: the work of the Centre for Workforce Intelligence**

Prof. Moira Livingstone, Commissioning Director, Centre for Workforce Intelligence

- **Making every GP count: outcomes from the RCGP Sessional GP Project**

Susan Stone, Support Clinical Lead for Sessional GPs in Commissioning, RCGP

This session will examine the challenges of getting enough good GPs into practice for the delivery of effective clinical care.

G5
GPF

Managing all that information!

- Kathie Applebee, Psychologist & Management Consultant and Practice Principal

How to make the most of resources such as the internet, intranet, Facebook and Twitter within the practice and externally with patients.

G6
AItS

Through the otoscope – getting under the skin of GP careers

Speakers tbc

To showcase different careers available as a GP – specialised clinical, managerial, academic, teaching, international etc. The chat-show-like interview of the “guests” will also allow for questions from the floor.

G7
Clinical

Promoting excellence in primary care: 10 tips to improve dementia care

- Dr Louise Robinson, Professor of Primary Care, RCGP Champion for Ageing and Older People

This session will consider how we can promote better quality care in the early stages of dementia. Provide GPs/nurses with ten tips for how they can improve the standard of dementia care in their practice, from more timely diagnosis and early intervention through to advance care planning and end of life care.

G8
Short papers

Short papers: research

Chair: tbc

- **Combining general practice with international work: experiences of UK GPs**

Dr Chris Smith, Imperial College London

- **Reducing referrals for elective care: pilot evaluation of a new referral management system in SE London**

Dr Ellen Wright, Department of Primary Care and Public Health Sciences, King's College London

- **A gene test for smokers and implications for genetic testing in primary care**

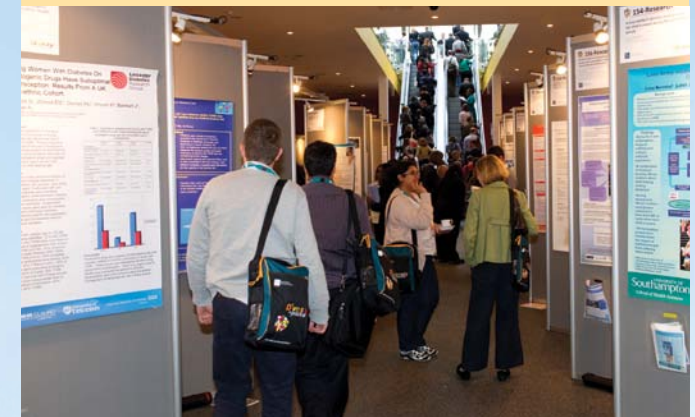
Dr John Nichols, University of Surrey

- **TrueBlue collaborative care for managing depression, diabetes and heart disease**

Prof. James Dunbar, Greater Green Triangle, University Department of Rural Health, Flinders and Deakin Universities

Poster presentations

Poster displays offer a more informal setting in which to learn about a wide variety of scientific, research, clinical and education projects and service developments. They provide an excellent opportunity for delegates to showcase their own work and to shape the conference agenda.



Please check the website or app for updates on the short paper, fringe and satellite programmes.

Conference information

SAPC and RCGP partnership

SAPC

The SAPC will be holding their Annual Conference in 2012 in partnership with the RCGP at the SECC, Glasgow. The SAPC event *Celebrating Difference* is on 3 October and then in partnership with the RCGP on 4 October.

The SAPC extends a warm welcome to RCGP Annual Conference delegates to join them on 3 October for a meeting that will be celebrating difference, including a festival of dangerous ideas. It offers an opportunity to discuss the latest from the cutting edge of primary care education and research, and to share creative but critical conversations in the Innovations and Ideas sessions. All RCGP delegates are invited to attend the plenary lecture from Anna Dixon of the King's Fund on 3 October at 4pm. Then all SAPC delegates will share the first day of the RCGP Annual Conference, providing an excellent opportunity for specialist academic input to the programme. Visit the SAPC website to find out more about the work of SAPC and the conference: www.sapc.ac.uk.



Principal sponsor



The MDDUS is delighted to be principal sponsor of this year's conference in Glasgow.

A mutual organisation, we have been providing indemnity, advice and guidance on medico-legal matters to members who encounter professional difficulties for over 100 years. With a team of highly qualified and experienced personnel, and offices in Glasgow and London, the MDDUS prides itself on providing members with a quality, personalised service at competitive rates. As a result our membership size is growing year on year throughout the UK.

Inaugural Ann McPherson Memorial Lecture

This inaugural lecture is to celebrate the extraordinary life and achievements of Dr Ann McPherson. Ann had an unconventional but stellar career and lived life with a joie de vivre.

Her interests spanned the life cycle from women's reproductive health, to young people's health, to gathering narrative experiences of serious illness (healthtalkonline.org) and latterly as Chair of Healthcare Professionals for assisted dying. Her focus was always 'the patient' and her vision was to look outside of the box and challenge the 'status quo'. Ann was a founder member and Chair of the RCGP Adolescent Health Group. As primary care practitioners who support the development of youth-friendly primary care we are proud to build upon Ann's legacy, and others, notably Dr Chris Donovan.



Sponsors' symposia

D5 Friday 12.00-1.00

Keeping up to date in the world of employment law



Thursday lunchtime

Adult eczema: Practical tips



Thursday lunchtime

TAVI – a new option for your high risk patients with aortic stenosis



Friday lunchtime

Gut microbiota and immune health



Friday lunchtime

Polypharmacy Medicines Optimisation Review (PMOR) - Delivering QIPP and QoF outcomes across a group of GP practices within a CCG



Conference information

About the exhibition

The exhibition is an integral part of the event, enabling delegates to explore and compare a vast array of products and services, meet new and existing suppliers and help exhibitors with market research and information.

The RCGP Village is a major focus for the exhibition and will feature products and services from many different College departments. Stands will be located in Hall 5 at the SECC, together with the registration area, poster displays and refreshment zones.



Other activities

Workshops – a full programme of pre-bookable workshops will be available. Check the website and app for full details.

Fringe meetings – a dynamic and varied programme of fringe and satellite meetings is also available. Check the website and app for full information.

Dangerous ideas soap box – offers a platform for you to share an important idea that you think needs to be heard in the primary care and/or academic primary care community. Joint initiative with SAPC. Come and jump on the soap box – persuade the audience why your idea matters and you could find your idea in print.

Round table discussions – an informal opportunity to set up your own discussion on any topic.

Conference app – keep up to date with programme changes and build your own conference itinerary. Download the app in advance to your iPhone or Android from your app store. Available from mid-May.

Social programme

Wednesday

RCGP wine tasting series celebrating the College's 60th anniversary

The launch of a prestigious series of evenings, offering RCGP members the opportunity to sample and be educated on a selection of fine wines in the good company of their peers.

The series will be hosted by College Wine Advisor Dr Phillip R Evans, FRCGP, AIWS, an RCGP Fellow who has recently retired from practice in Bury St Edmunds, Suffolk. He is an Associate of the Institute of Wine and Spirits and is currently studying for the Master of Wine qualification.

The session will last 90 minutes and will include the chance to sample and learn more about eight specially selected wines. Tickets are limited so please book early. All proceeds go to the College's Capital Appeal.

Tickets cost £29.00.

Thursday

Scottish supper

This Burns Night-style Scottish supper, including traditional piping of the haggis, will take place at the beautiful Burrell Collection building in Pollock Park in Glasgow. All the entertainment will be provided by Scottish fellows and members of the college.

Tickets cost £45.00 and include a three-course dinner with wine, whisky and all the evening's entertainment.

AiT curry and quiz night

Indian buffet supper and quiz at Bombay Blues in central Glasgow. Then join First5 colleagues for a night of dancing and fun in the Grand Ballroom of Sloans, the oldest bar and restaurant in Glasgow.

Tickets cost £18.50 and include supper, quiz, one glass of wine and entry to Sloans.

First5 social night

Wine reception and fork buffet supper at the stunning and exclusive Corinthian Club in central Glasgow. A fabulous opportunity for informal networking and supper in a spectacular environment. Then for a change of atmosphere join AiT colleagues for a night of dancing and fun in the Grand Ballroom of Sloans, the oldest bar and restaurant in Glasgow.

Tickets cost £27.50 and include fork buffet supper, wine reception and entry to Sloans.

Friday

RCGP 60th anniversary dinner, party and ceilidh

This exciting, informal evening of entertainment will celebrate the 60th anniversary of the RCGP. The tickets include a drinks reception, a three-course dinner with wine and a variety of entertainment including live music and comedy provided by some of Scotland's up and coming young artistes. The evening

will culminate in a traditional Scottish ceilidh with the brilliant band, Portobello. The celebration will take place in the newly refurbished Argyll Suite at the Crowne Plaza Hotel, next door to the conference venue on the banks of the Clyde. The evening will also include presentation of the UK-wide Caring for Carers Awards.



Tickets cost £49.50 and include drinks, dinner and all the entertainment.

Booking form

How to register



Online:
www.rcgp.org.uk/annualconference



Phone:
+ 44 (0)20 8832 7311



Fax:
+ 44 (0)20 8832 7301



Email:
rcgp@profileproductions.co.uk



Post:
Profile Productions Ltd, Northumberland House,
Popes Lane, London W5 4NG

Personal details

Title

Name

Position

Organisation

Address

Postcode

Tel

Email

RCGP member Membership no

Special requirements

Vegetarian Vegan Wheelchair access Loop system Other

Delegate pricing

Prices are inclusive of VAT

| Ticket type | After 25 June 2012 | |
|---|--|---|
| RCGP member | | |
| Full conference <input type="checkbox"/> | £460 | Overseas delegates who are members of their home country's equivalent professional body qualify for the member rate. Proof of membership must be supplied when registering. |
| One day: Thurs <input type="checkbox"/> Fri <input type="checkbox"/> | £233 | |
| Saturday only <input type="checkbox"/> | £95 | |
| Non-member | | |
| Full conference <input type="checkbox"/> | £567 | |
| One day: Thurs <input type="checkbox"/> Fri <input type="checkbox"/> | £271 | |
| Saturday only <input type="checkbox"/> | £120 | |
| Concessions | | |
| AiT <input type="checkbox"/> GPF member <input type="checkbox"/> Retired RCGP member <input type="checkbox"/> | | If you are a trainee GP, practice manager, practice nurse or physician assistant, why not join the RCGP to qualify for concessionary delegate rates and a host of other benefits? Call 020 3188 7664 for details. |
| Full conference <input type="checkbox"/> | £246 | |
| One day: Thurs <input type="checkbox"/> Fri <input type="checkbox"/> | £126 | |
| Saturday only <input type="checkbox"/> | £76 | |
| Students | | |
| Full conference <input type="checkbox"/> | £107 | |
| One day: Thurs <input type="checkbox"/> Fri <input type="checkbox"/> | £63 | |
| Saturday only <input type="checkbox"/> | FREE | |
| Practice team ticket | 3 full registration places: 1 GP + 2 non-GP practice team colleagues | |
| | £888 | |
| Group ticket | 5 places for the price of 4: 5 full RCGP members registering for the full Conference | |
| | £1840 | |





Booking form

Concurrent sessions

Concurrent session A

A1 A2 A3 A4.1 A4.2 A5 A6 A7 A8

Concurrent session B

B1 B2 B3 B4.1 B4.2 B5 B6 B7 B8

Concurrent session C

C1 C2 C3 C4 C5 C6 C7 C8

Concurrent session D

D1 D2 D3 D4 D5 D6 D7 D8

Concurrent session E

E1 E2 E3 E4 E5 E6 E7 E8

Concurrent session F

F1 F2 F3 F4 F5 F6 F7 F8

Concurrent session G

G1 G2 G3 G4 G5 G6 G7 G8

Social events

Wine tasting – £29.00. No of extra tickets

Scottish supper – £45.00. No of extra tickets

AiT curry and quiz night – £18.50. No of extra tickets

First5 – £27.50. No of extra tickets

60th anniversary dinner – £49.50. No of extra tickets

Please return booking form to:

Profile Productions Ltd

Northumberland House,
11 The Pavement, Popes Lane,
London W5 4NG

t: +44 (0)20 8832 7311

f: +44 (0)20 8832 7301

e: rcgp@profileproductions.co.uk

w: www.rcgp.org.uk/annualconference



Payment details

Cheque

I enclose a cheque made payable to **RCGP Conferences Ltd** for the sum of £ _____

Credit/debit card

Please debit my credit/debit card for the sum of £ _____

Card no / / /

Expiry / Issue No Security Code

Name and address of cardholder if different to delegate attending:

Cardholder name _____

Address _____

Postcode _____

Tel _____

Email _____

Invoice

Please send me an invoice for the sum of £ _____

Purchase Order No: _____

Invoice contact name _____

Address _____

Postcode _____

Tel _____

Email _____

By signing this form I have read and agreed to the terms and conditions:

Signature _____

Date _____

Terms and conditions:

- The organiser of the RCGP Annual Primary Care Conference is Profile Productions Ltd, Northumberland House, Popes Lane, London W5 4NG.
- Registrations can only be accepted on receipt of a completed registration form. Completion of this registration form constitutes a legally binding agreement to pay any invoices raised associated with registration including any cancellation fees as detailed in points 11 & 12. You must sign agreeing to the terms and conditions in order for your booking to be processed.
- Your place is not guaranteed until you have received confirmation and joining instructions from Profile Productions Ltd.
- Confirmation will be sent to you within 14 working days of receiving your booking.
- Profile Productions Ltd cannot be held responsible should your registration form not be received.
- If you have not heard from us 14 working days after sending your completed form, or 14 days before the start date of the conference, it is your responsibility to contact us to ensure your place is booked.
- All invoices must be paid within 21 days of the invoice date and MUST be paid prior to the conference. Failure to do so may result in your place being cancelled.
- Any delegates registering within 28 days of the event MUST include a valid credit card for payment on the registration form.
- The delegate is responsible for ensuring payment to Profile Productions Ltd has been made.
- Any delegates arriving at conference with an outstanding payment will be asked to provide credit card details as a guarantee.
- Registration fees include VAT @ the prevailing rate, complimentary refreshments, lunch and conference materials. Cancellations will only be accepted in writing. Cancellations received on or prior to 3 September 2012 will be refunded subject to a £45 administration fee. **Cancellations received after 3 September 2012 will not be refunded; however, substitutions will be accepted at any time, but please notify the organisers in writing of any name changes.**
- Any cancellation notices received prior to 3 September 2012 for a registration that still has payment outstanding will be liable for payment of a cancellation fee of £45. Any cancellation notices received after 3 September 2012 for registration that still has payment outstanding will be liable for the full outstanding amount.
- Any delegate registered to attend, who for whatever reason may not be able to attend the conference, is still liable for payment as per the cancellation policy in points 11 & 12.



Fringe and satellite programme

Wednesday

2.00 A pre-conference for AiT, First5 and JIC (£25.00)

For the first time the RCGP will host a pre-conference open to all national and international AiTs and First5 GPs.

Dr Iona Heath, President, RCGP, Dr Steve Mowle, Vice-Chair, RCGP and the Leads of the AiT, First5 and JIC groups

This special half day event will be interactive, informative and fun. It offers a unique opportunity to:

- meet new UK and international colleagues and make friends
- explore what 'Global General Practice' means to you and debate the changing role of the GPs beyond the consulting room
- learn more about and get involved with the RCGP AiT, First5 and JIC committees
- warm up for the conference, or get a taster if you cannot make it to the main conference.

6.00 AiT Supplement 1: Making primary care research relevant: choosing a clinical and academic career

Prof. Helen Lester, Chair SAPC and Prof. Trish Greenhalgh, Centre for Primary Care and Public Health, Barts and The London School of Medicine and Dentistry

This session aims to broaden the appeal of primary care research by demonstrating its relevance to clinical work, providing suggestions on how to get involved and tips on how to combine a clinical and academic career. Aimed at AiTs, Academic Clinical Fellows, other early career primary care researchers or those interested in primary care research.

Thursday

8.20 Patient involvement: are you serious - PPG Devolved Groups

Using evidence, expertise and case studies - to persuade GPs and practice staff that patient involvement can add value to their practice and enhance their working day through collaboration.

8.20 RCGP Scotland: Current priorities and future plans, generalism in Scotland and beyond

A session comprising presentations and feedback for RCGP Scotland members and fellows and other interested colleagues to hear about current direction and initiatives being led by the College in Scotland and to ask questions about these to help shape and inform future work. Prof Roberts, a rural doctor in Belleville Wisconsin, USA will provide an international perspective and commentary.

6.00 AiT Supplement 2: Financial health check

Dr Colin Hunter, Honorary Treasurer, RCGP and Dr Helen Stokes-Lampard, Assistant Honorary Treasurer, RCGP

This session will be aimed at AiTs and First5 members and explore the financial impact of different ways of working as a qualified GP. This will include a discussion of tax and pension implications as well as an exploration of the partnership model and the finances underpinning this. An interactive Q&A session will allow members an unique opportunity to quiz key College officers and financial experts.

6.00 First5 management – How to manage a project, a team and yourself!

Dr Clare Taylor, First5 Clinical Lead and Fiona Dalziel, GP Foundation

First5 GPs highlighted practice management as their number one learning need in the First5 survey. This workshop focuses on important aspects of management in relation to undertaking a specific project within a practice, involving the team in your work and will also focus on how First5 GPs can manage themselves when taking on management challenges.

6.00 RCGP Faculties: Engagement and delivering policies followed by a networking session

Friday

8.00 End of Life Care - What do patients need, what do GPs need and what do you need?

Dr David Carroll, GP Facilitator for Palliative Care, NHS Grampian and Sue Kinsey, Immediate Past Chair, P3, RCGP Scotland EOLC Working Group

In June 2010, the RCGP Scotland End of Life Care sub-group launched two surveys, one aimed at patients and the other at GPs, to discover what they felt good end of life care and what was required to achieve this. Both target groups were asked identical questions so that the feedback could be correlated.

This session will provide descriptive feedback of the survey responses with interactive discussion and sharing ideas as to how improvements to End of Life Care could be embedded into practice.

8.00 Christian Medical Fellowship - Breakfast will be served

Speakers to be announced soon

8.00 Genetics and the GP: Spotlight on the family history

Dr Michelle Bishop, Mr Robert Newton, Dr Imran Rafi and other GPs with a special interest in genetics

The UK is a multicultural society, which has implications for genetic risk assessment particularly when considering a person's population ancestry. The clinical utility of a genetic family history is recognised internationally, and as such has become embedded in practice. Participants at this session will review the use of internationally agreed symbols that have been developed to ensure consistent documentation of family history information throughout the world. The session will also highlight the importance of population ancestry in genetic risk assessment, and how this information can be used within a multicultural patient base. The role of the family history in genetic risk assessment of consanguineous relationships and their offspring will also be discussed.

8.00 Long live the Balint group: maintaining a focus on clinician -patient relationships in a 21st century general practice climate

Participants will understand the purpose, nature and relevance of Balint work in relation to their everyday practice, in particular to consultations which leave them feeling disturbed, puzzled or stuck.

6.00 Mentoring for First5 GPs - First5 team

Mentoring is a vital part of personal and professional development. This workshop will explore the benefits of mentoring for First5 GPs, explain what mentoring actually is, give advice on how to find a mentor and discuss how to get the best out of the mentoring relationship.

6.00 Laughter therapy in general practice

Robin Graham, Laughter Therapist

End your day with an informative, educational and interactive session – backed up by evidence of the physical and psychological benefits of laughter therapy. This is a therapy originating in India where laughter clubs have changed the lives of many people.

6.00 British Heart Foundation: Healthy Lives Programme

6.00 Sustainability workshop

Dr Tim Ballard, RCGP Lead on Sustainability



Conference information

Who should attend?

- Academic clinical fellows
- Academics
- Associate directors
- Associates-in-Training (AiTs)
- Commissioning managers
- Consultants
- Family physicians
- GPs
- GP managers
- GP partners
- GP principals
- GP trainers
- Locums
- Lecturers and professors
- Medical advisers
- Medical directors
- Medical educators
- Newly qualified GPs (First5)
- Nurse practitioners
- Practice managers
- Practice nurses
- Primary care facilitators
- Physician assistants
- Researchers

Conference app

Available to download in i-Tunes for iphones or the Playstore for Android phones the app is free of charge.

The app has up-to-date programme information, speaker info, poster abstracts and everything else you need to get the most out of Conference.



Venue information

Scottish Exhibition and Conference Centre (SECC)



The Scottish Exhibition and Conference Centre (SECC) is a world-class conference and exhibition venue. Situated by the River Clyde with easy access to the attractions of Glasgow city centre, the SECC benefits from three onsite hotels and its own railway station.

The 3000-seat Clyde Auditorium, self-contained Lomond Suite, 30 breakout rooms and five exhibition halls offer impressive facilities making it an ideal choice for the RCGP and SAPC conferences. For further details please visit www.secc.co.uk.

Accommodation

Glasgow offers a wide range of accommodation for all budgets and requirements. Hotel reservations are being handled through Glasgow City Marketing Bureau, who have negotiated special rates during the event. Full details will be sent to delegates on confirmation of booking. Visit the Conference website for a list of hotels and online reservations.

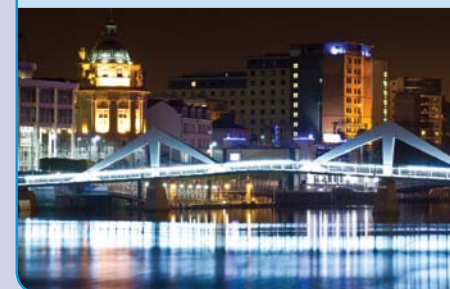


Getting to Glasgow

We are actively encouraging attendees to travel by public transport and large reductions in fares are available if travel is booked well in advance.

Glasgow International Airport is a 15-minute drive from the SECC, and provides direct access to and from all major UK, European and North American cities. Glasgow Prestwick Airport is a 45-minute drive by direct motorway link to the SECC.

Glasgow Central Train Station links to all UK cities and there are 20 direct trains per day to Glasgow from London with return fares available from £26. Glasgow Queen Street Station operates routes mainly to Central and Northern Scotland with direct trains from Edinburgh every 15 minutes. Scotrail runs train services direct to the SECC from Glasgow Central Station every 10 minutes.



For further details and prices either call or visit:

National Rail Enquiries:
08457 484950
www.nationalrail.co.uk

ScotRail:
0845 601 5929
www.scotrail.co.uk