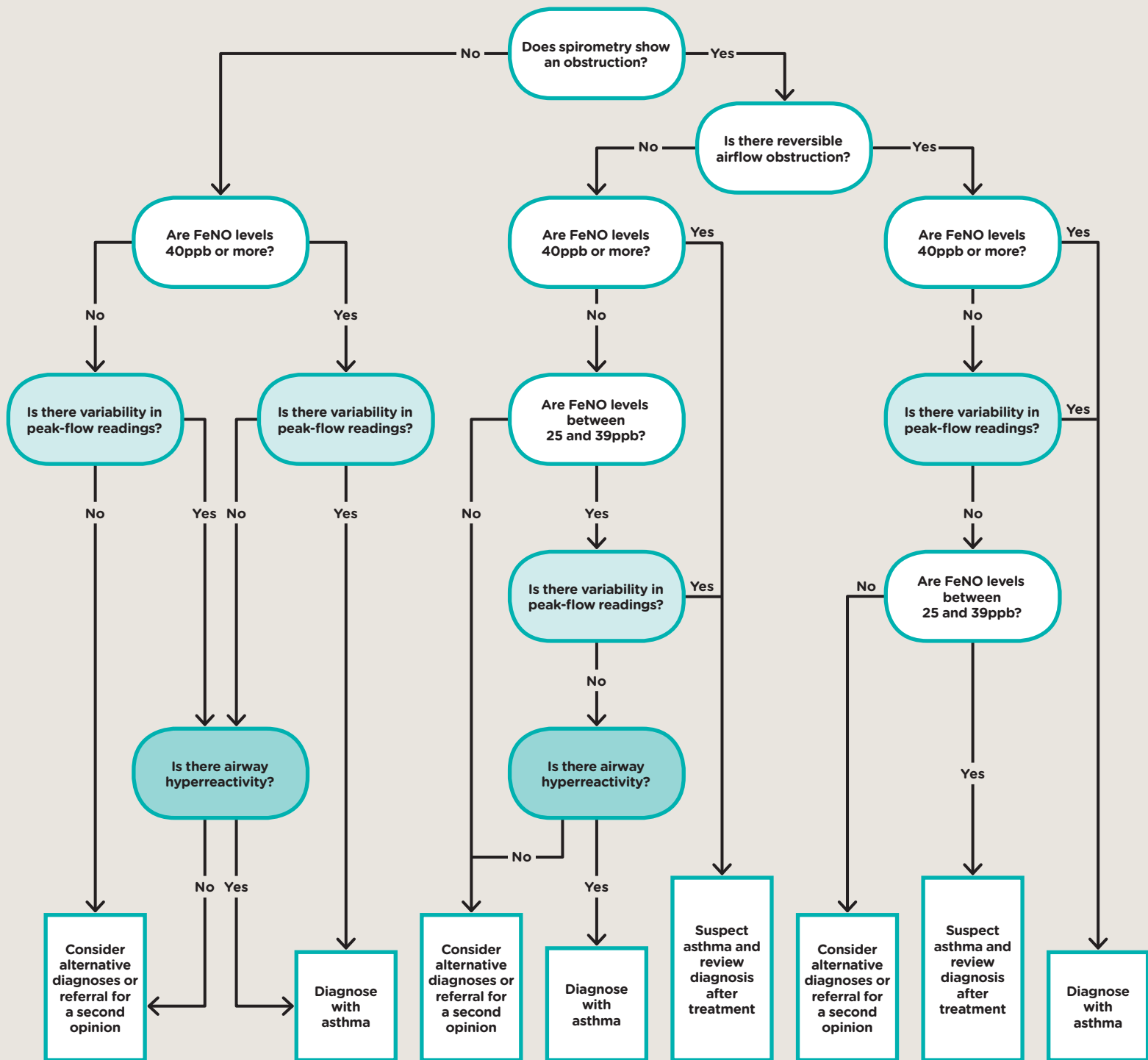


Objective tests in adults aged 17 and over with suspected asthma



Abbreviations

FeNO: fractional exhaled nitric oxide
BDR: bronchodilator reversibility

Positive test thresholds

Obstructive spirometry: FEV1/FVC ratio less than 70% (or below the lower limit of normal if available)

FeNO: 40ppb or more

BDR: improvement in FEV1 of 12% or more and increase in volume of 200ml or more

Peak-flow variability: variability over 20%

Direct bronchial challenge test with histamine or methacholine: PC20 of 8mg/ml or less

This algorithm is based on recommendations from NICE's guideline on asthma: diagnosis, monitoring and chronic asthma management (published November 2017)